

AVerVision CP355

Portable Document Camera



 **folded view**

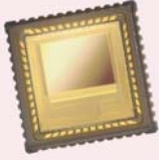
Product Description

The incredibly powerful AVerVision CP355 Interactive Document Camera provides an enhanced teaching environment in a compact solution. The CP series of document cameras has a robust flexible neck ideal for displaying and capturing images at any angle. This new design with patented camera head locking mechanism increases portability while adding security to the camera head whether being stored, or moved from class to class. This feature-packed FlexArm document camera touts a 3.2 mega pixel camera head and Auto Focus for an exceptionally clear image as well as a strong 80x total zoom including 5x optical zoom capability to highlight the smallest details. New to

the CP series is the wide-angle mode for a 15" x 11" viewing area, great for showing larger documents or objects. The 3.2 MP true image capture offers the sharpest print out. The CP355 seamlessly integrates with the new AVer+ software for advanced annotation, audio & video recording as well as network sharing for showing demonstrations to multiple classrooms over a local area network. These amazing features as well as exclusive AVer Presentation tools make the compact all-inclusive CP355 solution the perfect classroom presentation tool.

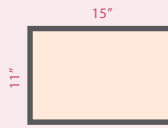
Feature Highlights

high quality images and videos



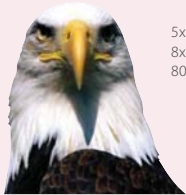
The 3.2 mega pixel sensor, upgraded hardware and fast Auto Focus produce exceptionally clear and sharp images.

wide angle mode



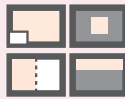
Increased viewing area for displaying up to 15" x 11" images or objects.

powerful zoom



5x Optical zoom, 2x AVERZOOM and 8x Digital Zoom create a powerful 80x total zoom capacity.

advanced presentation features and high quality capture



Feature rich including Picture-in-Picture, Split-Screen, AVerPresenter features and true 3.2 mega pixel single or time-lapsed still image capture.

patented laser positioning guides

Accurate viewing area provided by patented laser positioning guides and built-in LED light



AVer+ and AVerPen integration



New object-oriented AVer+ software for enhanced annotation, network sharing and AVerPen system integration.

Product Specifications and Package Content

image

image sensor	1/2.5" CMOS
pixels count	3.2M pixels
output resolution	HD 720p (1280 x 720)
frame rate	24fps (max.)
lens	F 3.2 (wide), F6.8 (tele)
shooting area	13" x 9.75"
	wide angle mode: 15.75" x 11.8"
focus	auto/manual
image rotation	camera head 0° / 90° / -90°
zoom	80x total zoom 5X optical zoom, 2X AVERZOOM™, 8x digital zoom

function

image effect	color/ B&W/ negative/ mirror/ reverse/ freeze auto/manual
white balance/exposure/nightview	text/ graphics/ high frame / wide angle
display mode	yes
picture-in-picture	yes
split screen	yes
AVerPresenter (AVerBox and AVerVisor)	yes
capture mode	single/ continuous
user profile	yes (up to 3)
timer	yes
flicker filter control	yes
remote control	yes (with laser pointer)
image storage	built-in memory (max: 80; 3M)

connectivity

VGA input	yes
VGA output	yes
DVI-I output	yes
S-video & composite output	yes
USB 2.0 port	yes
RS-232	yes (with S-video/RS232 adapter cable)

lighting

light source	embedded LED lamp
laser positioning guide	yes
light box	optional

accessories

carrying bag	standard
microscope adapters	optional

others

dimension	operating: 7" x 17" x 23.6" folded: 9.6" x 14" x 2.5"
net weight	5.73 lbs

software

software version	AVerPlus
------------------	----------